



POWERED BY myQ[®]

UNIVERSAL WIRELESS KEYPAD


MODEL: L979U

Product Manual



Overview

Your universal wireless keypad is compatible with most major brands of garage door openers manufactured after 1993 that use photoelectric sensors located near the bottom of the garage door track. The images throughout this manual are for reference only and your product may look different.

 **WARNING**

To prevent possible **SERIOUS INJURY** or **DEATH** from a moving gate or garage door:

- Install Wireless Keypad within sight of the garage door, out of reach of children at a minimum height of 5 feet (1.5 m), and away from **ALL** moving parts of door.
- **ALWAYS** keep remote controls out of reach of children. **NEVER** permit children to operate, or play with the remote control transmitters.
- Activate gate or door **ONLY** when it can be seen clearly, is properly adjusted and there are no obstructions to door travel.
- **ALWAYS** keep gate or garage door in sight until completely closed. **NEVER** permit anyone to cross the path of moving gate or door.



WARNING: This product can expose you to chemicals including lead, which are known to the State of California to cause cancer or birth defects or other reproductive harm. For more information go to www.P65Warnings.ca.gov.

IMPORTANT: Program the keypad to your garage door opener prior to installation.

Tap the buttons below to navigate to a specific section of the manual.

Compatibility

Programming the Keypad

Other important information:

Installation

Keypad Features

Replacing the Battery

Replacement Parts

Additional Resources

Compatibility

If using the universal wireless keypad with residential garage door openers, the keypad must be used with garage door openers manufactured after 1993 that utilize photoelectric sensors. The photoelectric sensors are always located on or near the bottom of the garage door track.

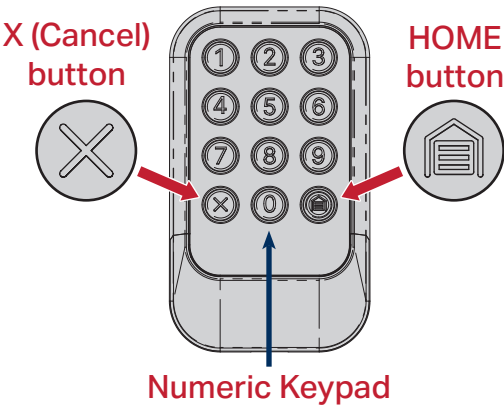
The universal wireless keypad is compatible with the following brands that use a program button:

LiftMaster®	1993-Current
Chamberlain®	1993-Current
Craftsman®	1993-Current
Genie®	1995-Current
Overhead Door®	1995-Current
Linear®	1997-Current
Stanley®	1998
Wayne Dalton®	1999
Raynor®	1993-Current
Performax®	2016-Current
Xtreme Garage®	2016-Current
Sommer®	2013-Current
Ryobi®	2016-Current

Guardian®, Do-It®, Garage Master®, Master Mechanic®, Moore-O-Matic®, and True Value® are compatible with the universal wireless keypad.

Programming the Keypad

IMPORTANT: Program the keypad to your garage door prior to installation.



01 Prepare:

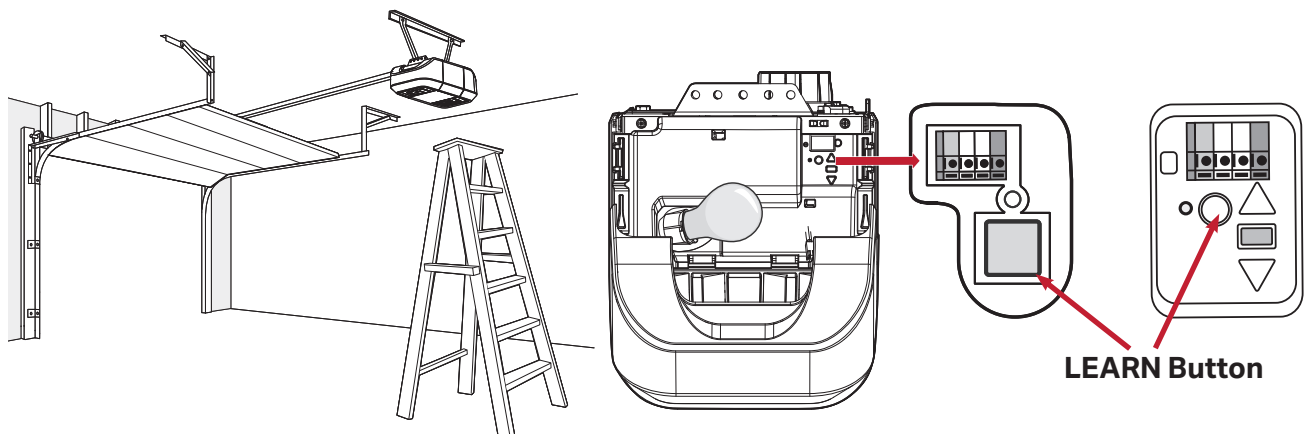
- **Read through the instructions carefully.**
- Watch out for time sensitive instructions marked with an hourglass icon.
- If at any time you wish to exit the programming steps, press the X button. If you still wish to program a permanent PIN, always start with step 01.
- Make sure the garage door is clear of ALL obstructions.
- Make sure the garage door opener has a working light. It will be needed for programming.



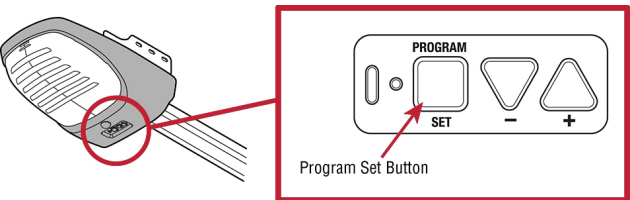
02 IMPORTANT: Your garage door opener has a button that is required to program your keypad. Different brands and models vary in the location and description of that button. Consult your garage door opener product manual for the location of the button and steps required to place your garage door opener into programming mode. Next, locate and, if necessary, identify the color of your garage door opener's button required for programming (A ladder may be required and you may have to remove a light cover).

Examples:

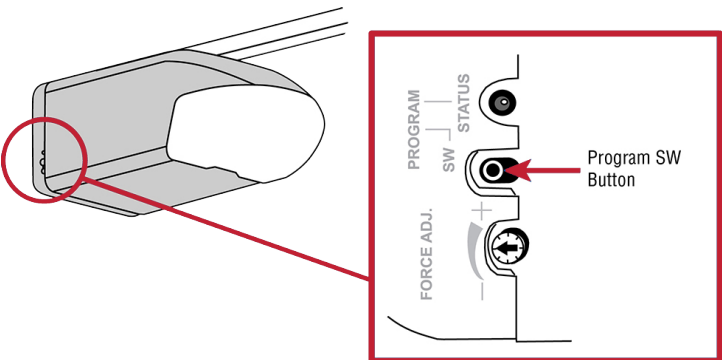
LiftMaster / Chamberlain / Craftsman / Raynor



Genie



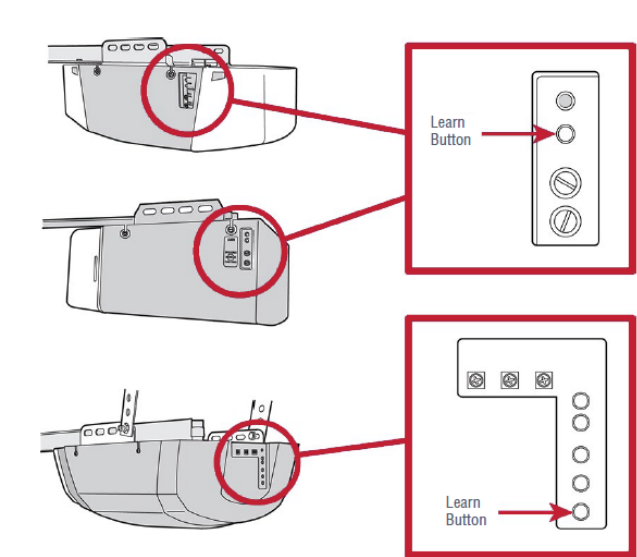
Wayne Dalton



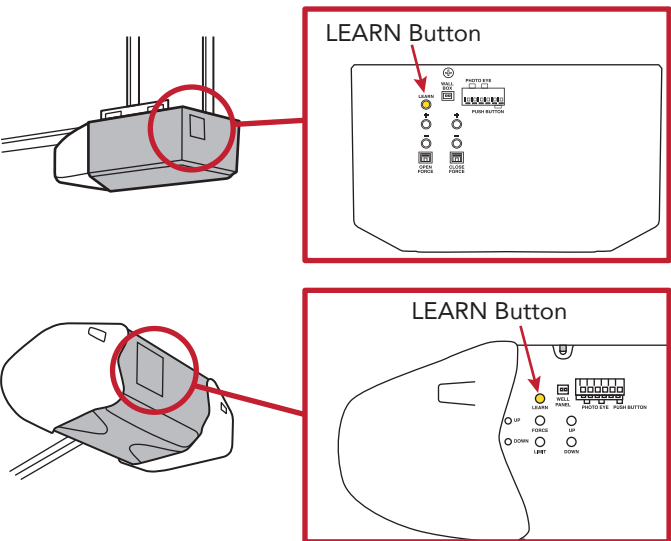
Programming the Keypad (continued)

Examples (continued):

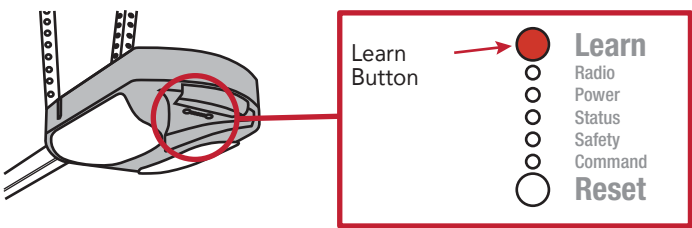
Linear



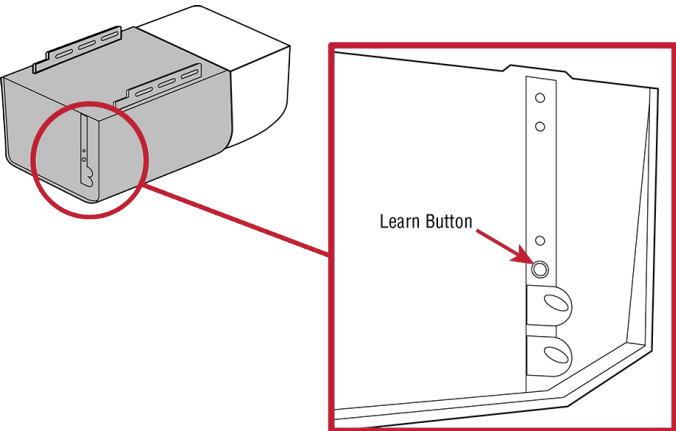
Guardian / Xtreme Garage / Performax



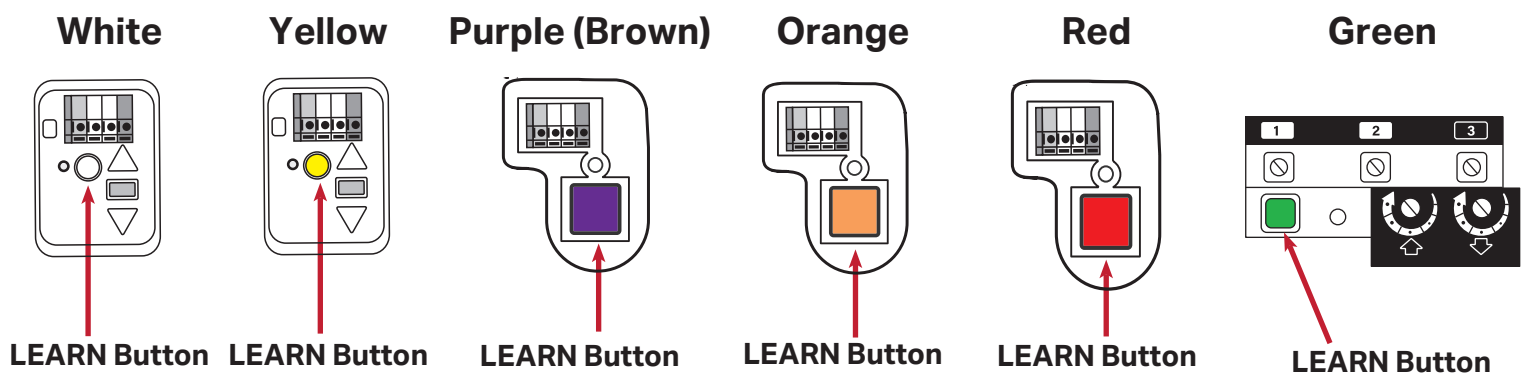
Sommer



Stanley



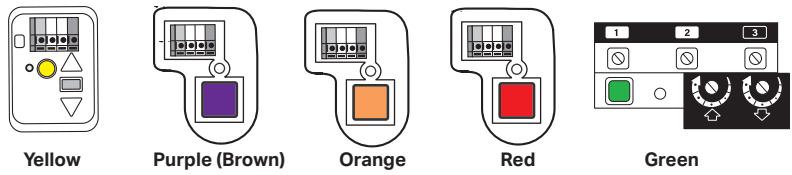
03 For keypad programming instructions, follow the directions below:
For **LiftMaster, Chamberlain, Craftsman, or Raynor brand** garage door openers, **tap the LEARN button color icon** for your garage door opener below:



NOTE: The color of the purple LEARN button may fade with time and appear brown.

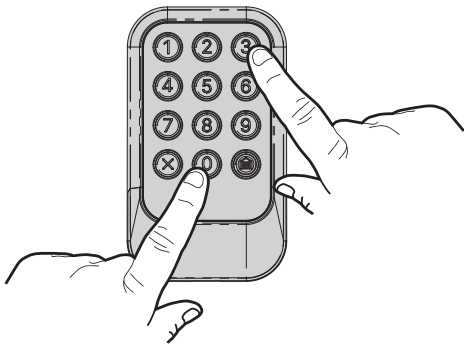
For **all other brands** of garage door openers, [tap here](#).

Program Keypad to a LiftMaster, Chamberlain, Craftsman, or Raynor Garage Door Opener Using a Yellow, Purple, Orange, Red, or Green LEARN Button

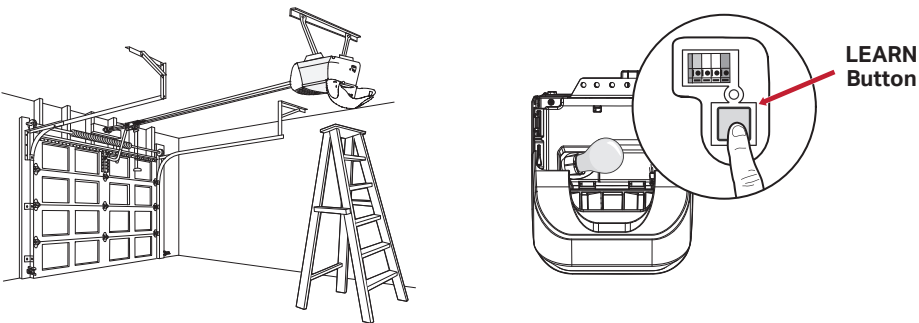


IMPORTANT: Read through all programming steps before you start.

01 Simultaneously press and hold the 0 and 3 buttons on the keypad until the blue LEDs stay solid (**typically 6 seconds**), then release the buttons.

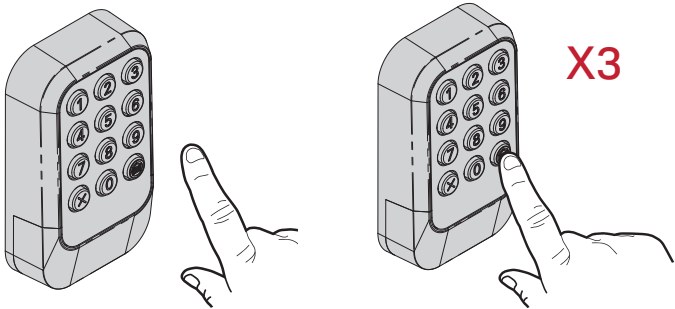


02 Press and **immediately** release the LEARN button.



15 Seconds

03 **Within 15 seconds** of pressing the LEARN button, on your keypad enter a 4-digit personal identification number (PIN) and **press the HOME button three times**.

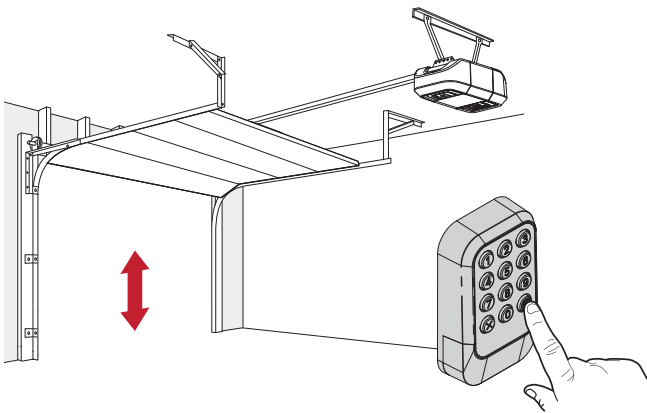


WARNING: Your garage door opener light will flash and your garage door will move.



3 Seconds

04 When your garage door moves, **within 3 seconds**, press and release the HOME button.



To test your keypad has programmed successfully **tap here.**

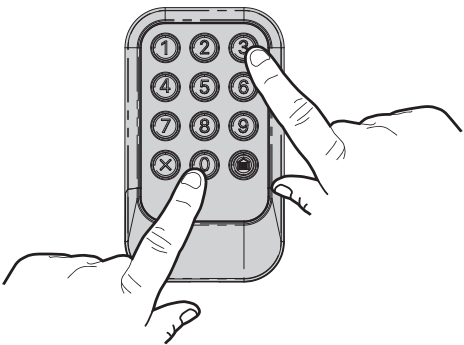
Program Keypad to Garage Door Opener Using a Program Button

IMPORTANT: Read through all programming steps before you start.

IMPORTANT: Have your garage door opener product manual available for the location of the button and steps required to place your garage door opener into programming mode. See [page 4](#) for more information.

01

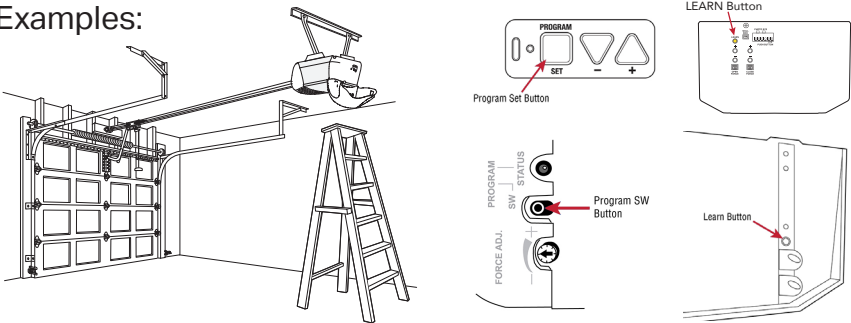
Simultaneously press and hold the 0 and 3 buttons on the keypad until the blue LEDs stay solid (**typically 6 seconds**), then release the buttons.



02

Set your garage door opener into programming mode.

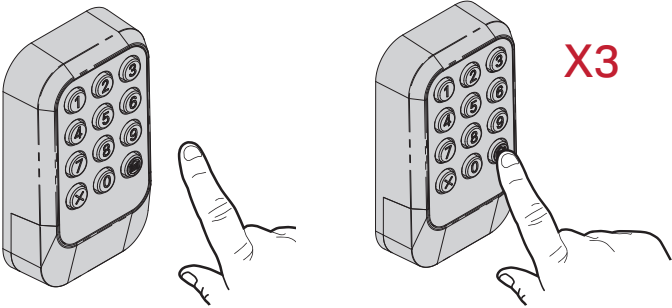
Examples:



15 Seconds

03

Within 15 seconds of setting your garage door opener into programming mode, on your keypad enter a 4-digit personal identification number (PIN) and **press the HOME button three times**.



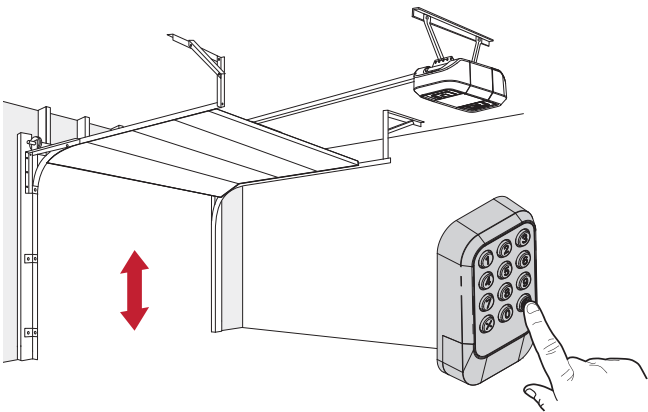
WARNING: Your garage door opener light might flash and your garage door will move.



3 Seconds

04

When your garage door moves, **within 3 seconds**, press and release the HOME button.



To test your keypad has programmed successfully [tap here](#).

Options to Program Keypad to a LiftMaster, Chamberlain, Craftsman, or Raynor Garage Door Opener with a White LEARN Button

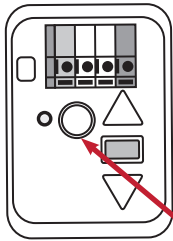


There are three ways to program your keypad to a garage door opener with a white LEARN button. Tap your preferred method below.

Option 1: To program your keypad using the myQ app, **tap the myQ app icon.**



Option 2: To program your keypad using garage door opener's LEARN button, **tap the LEARN button icon.**



LEARN Button

Option 3: To program your keypad using garage door opener's control panel, **tap the control panel icon.**



Program Keypad to a LiftMaster, Chamberlain, Craftsman, or Raynor Garage Door Opener with a White LEARN Button Using the myQ App

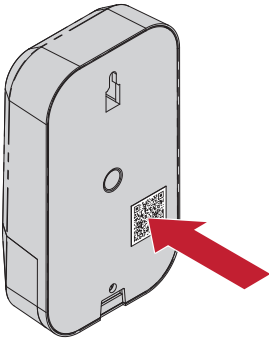


HIGHLY RECOMMENDED: Connect your garage door opener to the myQ app and program your keypad to the garage door opener to unlock exciting features that include PIN management, creation of temporary PINs for guest access, and battery charge level.

01 Tap or scan the QR code while using your smart device to download the myQ app. Follow the instructions in the app to connect to your garage door opener.



02 When your garage door opener is connected, scan the QR code on the reverse side of your keypad, and follow the programming instructions in the myQ app.

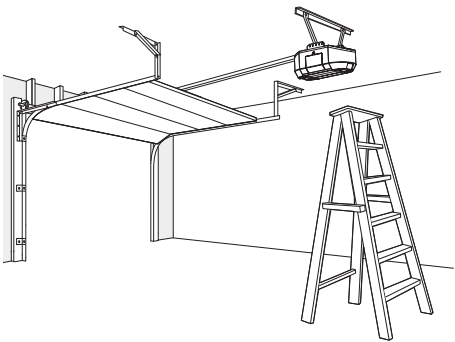


Once your keypad is programmed in the myQ app, you can enjoy the benefits of PIN management, setting up guest PINs, notifications, access history, and battery charge level.

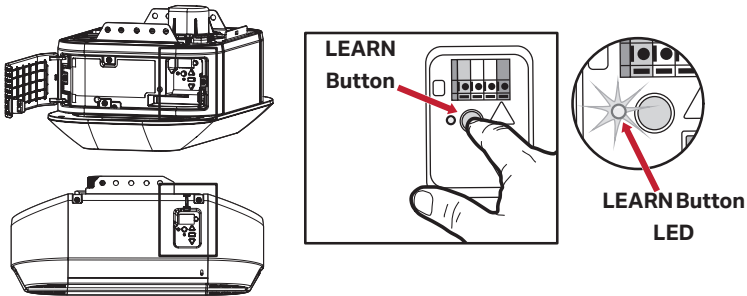
Program Keypad to a LiftMaster, Chamberlain, Craftsman, or Raynor Garage Door Opener with a White LEARN Button Using the LEARN Button



IMPORTANT: Read through all programming steps before you start.

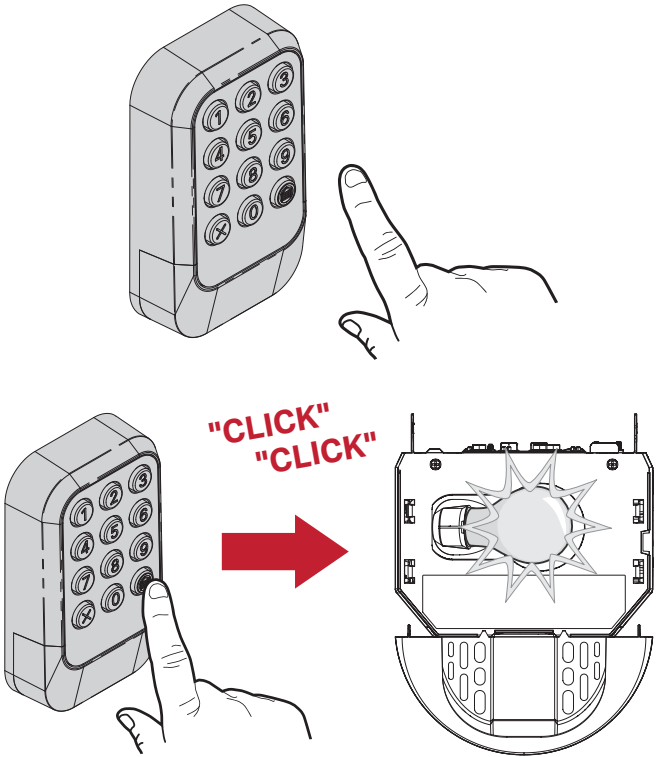


01 Press and **immediately** release the LEARN button.



30 Seconds

02 **Within 30 seconds** of pressing the LEARN button, enter a 4 to 8-digit personal identification number (PIN), then press and hold the HOME button until the garage door opener lights flash and/or two clicks are heard.



To test your keypad has programmed successfully **tap here.**

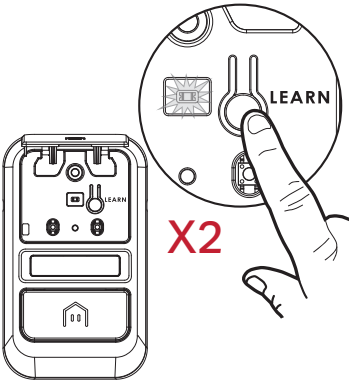
Program Keypad to a LiftMaster, Chamberlain, Craftsman, or Raynor Garage Door Opener with a White LEARN Button Using the Control Panel



IMPORTANT: Read through all programming steps before you start.

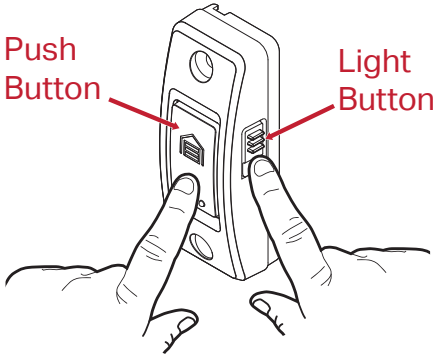
01 Follow the instructions below for your control panel model to set your garage door opener into programming mode.

Control Panel



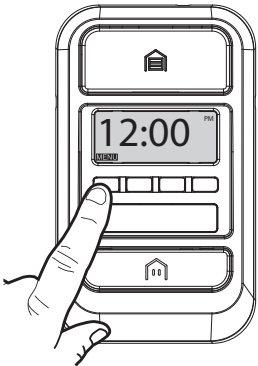
Lift the push bar. Press the LEARN button **twice**. The LED on the door control panel will pulse repeatedly.

Push Button Door Control



Press and hold the light button, then press and release the push button. The button LED will begin to flash.

Smart Control Panel

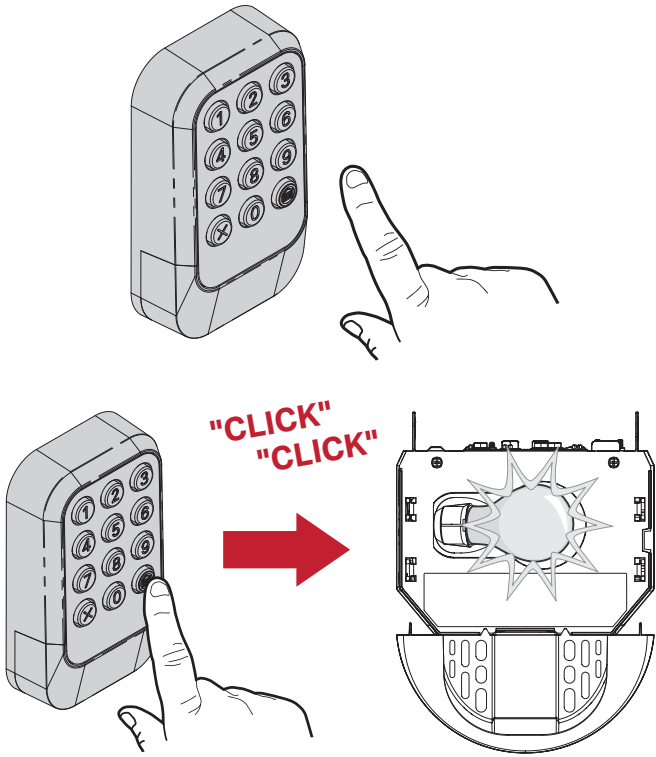


Select **MENU**, then select **PROGRAM** and follow on screen instructions.



30 Seconds

02 Within 30 seconds of completing step 01, enter a 4 to 8-digit personal identification number (PIN), then press and hold the HOME button until the garage door opener lights flash and/or two clicks are heard.



To test your keypad has programmed successfully [tap here](#).

Test your Keypad has Programmed Successfully

TEST FOR SUCCESS: With the garage door closed, enter the PIN you programmed and press the HOME button. The garage door opener will open the door. If the garage door does not open, wait for the garage door opener’s program button LED to turn off (for a LiftMaster, Chamberlain, Craftsman, or Raynor garage door opener with yellow or white LEARN button this could take up to 3 minutes). Then repeat the programming steps, go to **“Programming the Keypad”**.

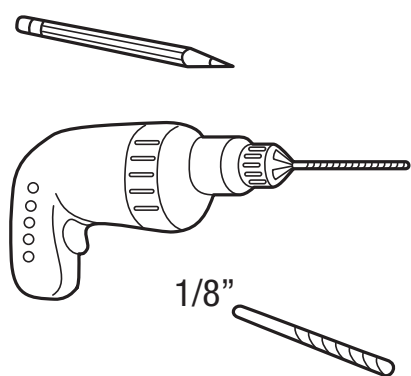
TROUBLESHOOTING: If you are trying to program your keypad to a LiftMaster, Chamberlain, Craftsman, or Raynor garage door opener with a white LEARN button and previously programmed the same PIN to your keypad with a garage door opener with a different program button, use the programming instructions on **page 6**. Please note: if you use these instructions, the garage door will not move - when the garage door opener lights flash and/or clicks once, the keypad has programmed successfully.

Now that your keypad is programmed and tested, continue to **Installation**.

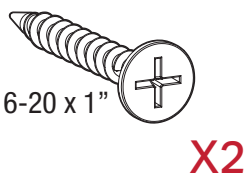
Installation

NOTE: If you currently have a LiftMaster, Chamberlain, Craftsman, or Raynor brand keypad installed at your home, this new keypad may fit with your current keypad's mounting holes. You can avoid drilling new holes if you remove your current keypad and use the same mounting locations.

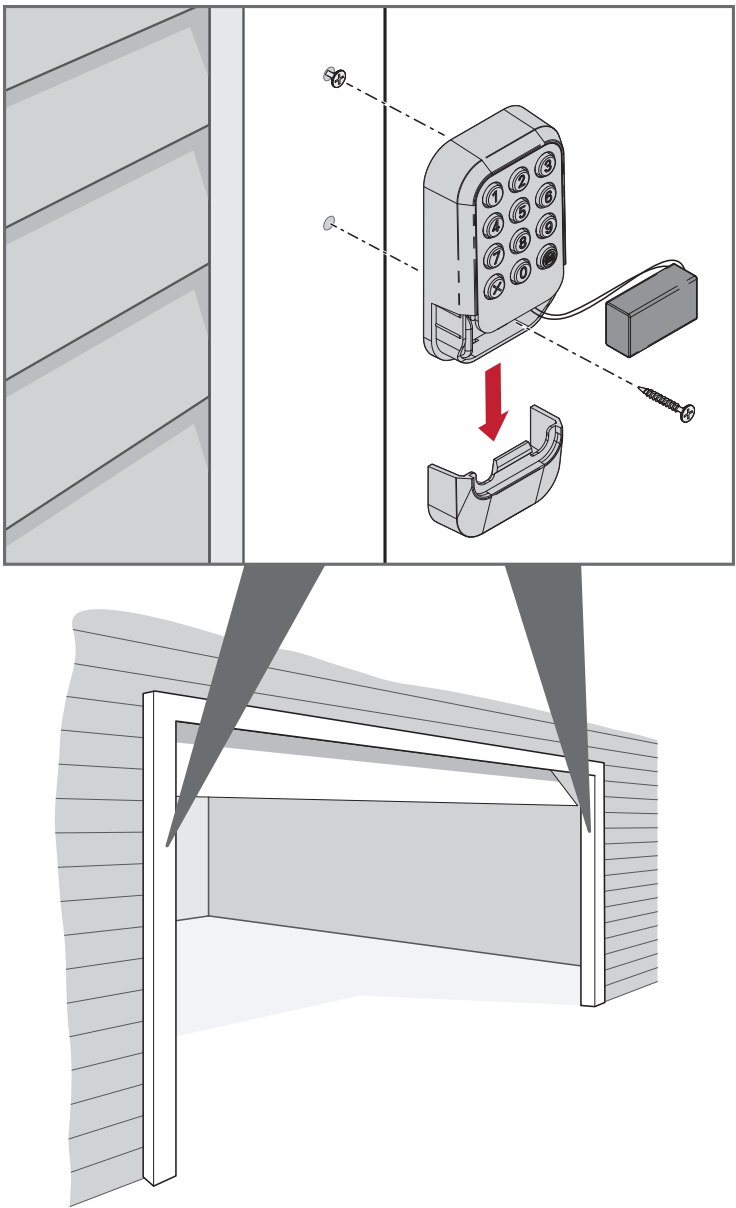
Tools Required



Hardware Included



1. Select a location to mount the keypad at a minimum height of 5 feet (1.5 m). Keep out of the reach of children.
2. Remove the battery cover and battery to access the lower mounting hole.
3. Mark where you want the top mounting hole of the keypad to be positioned and drill a 1/8-inch (3.2 mm) pilot hole.
4. Install the top screw, allowing 1/8 inch (3.2 mm) to protrude above the surface. Position the top mounting hole of the keypad over the top screw.
5. Mark the bottom hole of the keypad (located inside the battery housing) and drill a 1/8-inch (3.2 mm) pilot hole. Install the bottom screw. Do not overtighten to avoid cracking the plastic housing.
6. Reinstall the battery and replace the battery cover.



Keypad Features

The garage door opener activates when you press the personal identification number (PIN) and HOME button. The keypad will flash for 15 seconds. During that time the HOME button can be used to stop, start, or reverse the door.

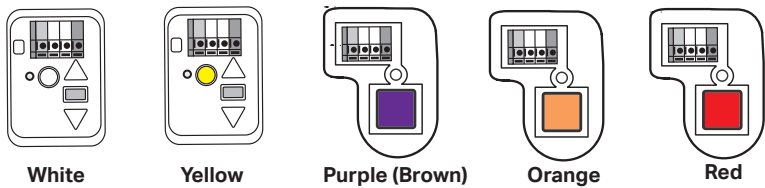
If you enter the intended PIN number incorrectly, press the X button to cancel (this can also be done after pressing the HOME button). Then enter the correct PIN number and HOME button to activate the garage door opener.

Multiple permanent PINs can be programmed to your garage door opener. To add additional permanent PINs, follow the same instructions as the first permanent PIN.

One Button Close

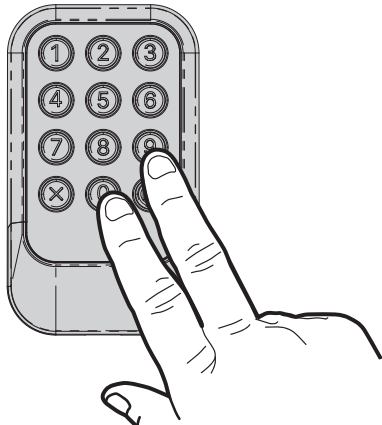
CLOSE your garage door by pressing **only the HOME button** instead of entering your PIN.

IMPORTANT: This feature is only available with LiftMaster, Chamberlain, Craftsman, and Raynor garage door openers with white, yellow, purple (brown), orange, and red LEARN buttons.



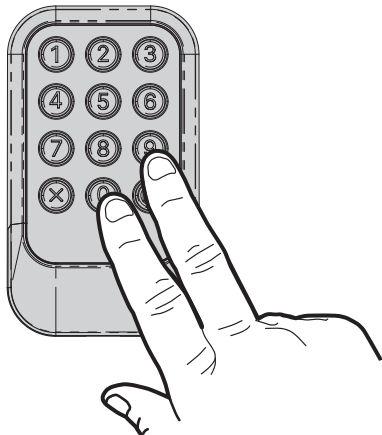
To deactivate one button close:

Press and hold the 0 and 9 buttons for 10 seconds. The keypad LEDs will flash **four** times when the one button close feature is deactivated.



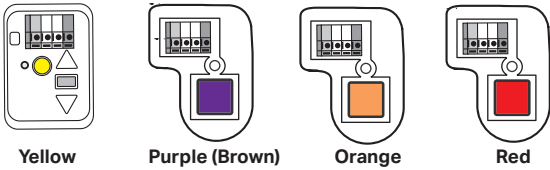
To activate one button close:

Press and hold the 0 and 9 buttons for 10 seconds. The keypad LEDs will flash **twice** when the one button close feature is activated.



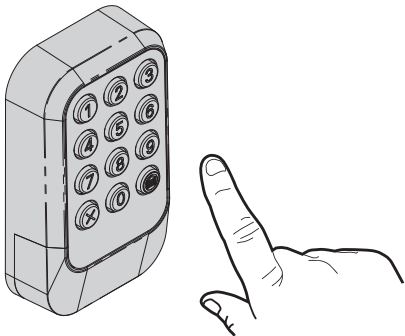
Change an Existing Permanent PIN

IMPORTANT: This feature is only available with LiftMaster, Chamberlain, Craftsman, and Raynor garage door openers with yellow, purple (brown), orange, and red LEARN buttons.

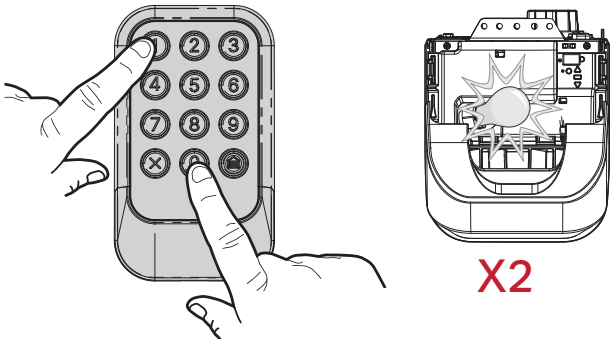


NOTE: The myQ app is required for changing an existing permanent PIN for LiftMaster, Chamberlain, Craftsman, and Raynor garage door openers with a white LEARN button. For instructions to connect to the myQ app [tap here](#).

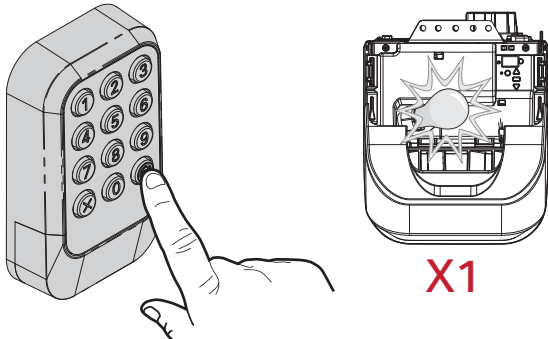
01 Enter the existing permanent PIN you want to change (do not press the HOME button).



02 Simultaneously press and hold the **0 and 1 buttons** until the garage door opener light flashes **twice** (typically within 6 seconds).



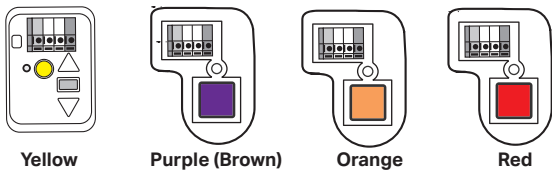
03 Enter the new 4-digit PIN of your choice and press the HOME button. The garage door opener light will flash once.



TEST FOR SUCCESS: With the garage door closed, enter the new PIN you just programmed and press the HOME button. The garage door opener will open the door.

Program a Temporary PIN

IMPORTANT: This feature is only available with LiftMaster, Chamberlain, Craftsman, and Raynor garage door openers with yellow, purple (brown), orange, and red LEARN buttons.



NOTE: The myQ app is required for setting temporary PINs for LiftMaster, Chamberlain, Craftsman, and Raynor garage door openers with a white LEARN button. For instructions to connect to the myQ app [tap here](#).

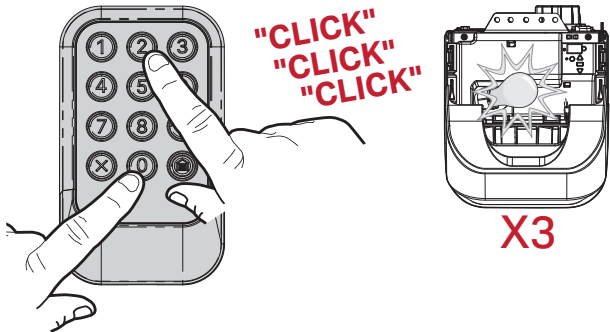
A temporary 4-digit personal identification number (PIN) can be programmed to allow guest access.
The temporary PIN can be set for a number of hours or a number of door openings.
The temporary PIN cannot be the same as any previously programmed permanent PIN.

Option 1: Set a Temporary PIN for Number of Hours

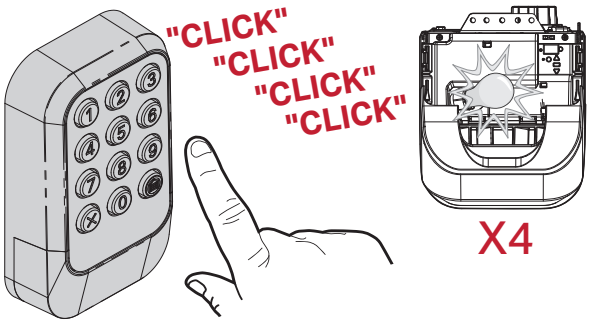


IMPORTANT: Each step below must be started within 15 seconds of completion of the previous step. Read through all programming steps before you start.

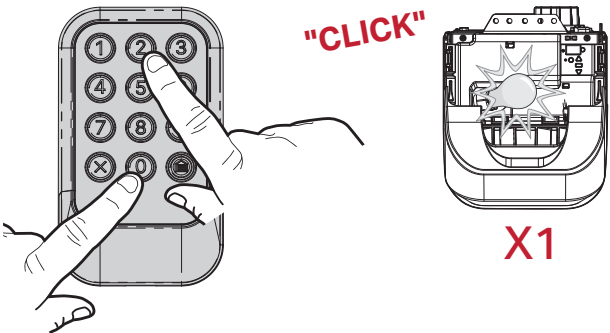
01 Enter any programmed permanent PIN (do not press the HOME button), and **within 5 seconds simultaneously press and hold the 0 and 2 buttons** on the keypad for six seconds until the garage door opener light flashes **and/or** clicks **three** times, then release the buttons.



02 Enter the temporary 4-digit PIN of your choice, then press the HOME button. The garage door opener light will flash **and/or** click **four** times.



03 Enter the number of hours the temporary PIN will work (1 to 255), then **simultaneously press and release the 0 and 2 buttons**. The garage door opener light will flash **and/or** click **once**.



TEST FOR SUCCESS: With the garage door closed, enter the temporary PIN you just programmed and press the HOME button. The garage door opener will open the door.

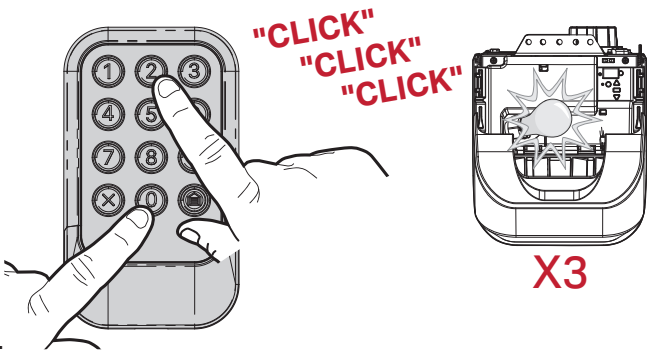
NOTE: Clear the temporary PIN by repeating steps 1 through 3, and set the number of hours to 0 at step 3.

Option 2: Set a Temporary PIN for Number of Openings

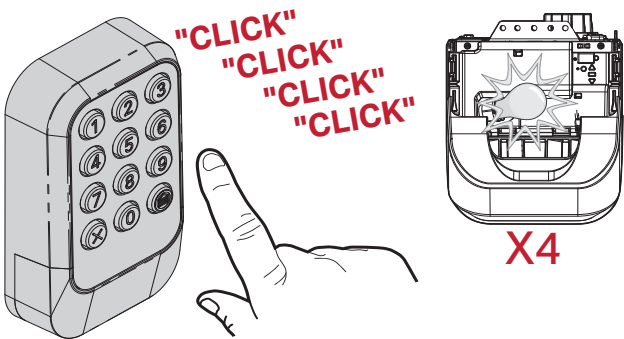


IMPORTANT: Each step below must be started within 15 seconds of completion of the previous step. Read through all programming steps before you start.

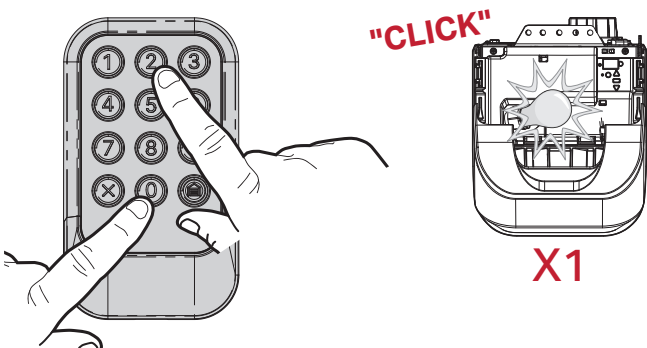
01 Enter any programmed permanent PIN (do not press the HOME button), and **within 5 seconds simultaneously press and hold the 0 and 2 buttons** on the keypad for six seconds until the garage door opener light flashes **and/or** clicks **three** times, then release the buttons.



02 Enter the temporary 4-digit PIN of your choice, then press the HOME button. The garage door opener light will flash **and/or** click **four** times.



03 Enter the number of openings the temporary PIN will work (1 to 255), then **simultaneously press and release the 0 and 1 buttons**. The garage door opener light will flash **and/or** click **once**.




TEST FOR SUCCESS: With the garage door closed, enter the temporary PIN you just programmed and press the HOME button. The garage door opener will open the door. **The test uses up one opening.**

NOTE: Use the HOME button to close the garage door. Using the "Openings" temporary PIN to close the garage door will use up one opening.

NOTE: Clear the temporary PIN by repeating steps 1 through 3, and set the number of openings to 0 at step 3.

Replacing the Battery



WARNING

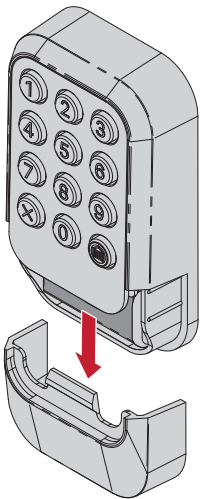
To prevent possible **SERIOUS INJURY** or **DEATH**:

- NEVER allow small children near batteries.
- If battery is swallowed, immediately notify doctor.

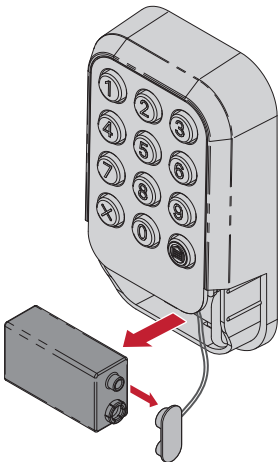
The LEDs on your wireless keypad will become dim or stop flashing when the battery is low and needs to be replaced. Replace the battery with a new 9V battery. Dispose of the old battery properly.

To replace the battery, follow the instructions as shown below. Reference the illustration below for each step.

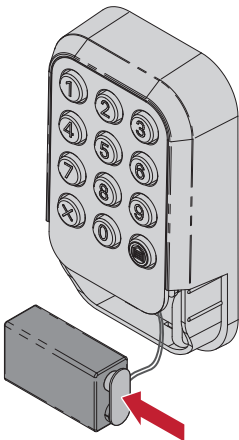
01 Slide the battery cover down to remove.



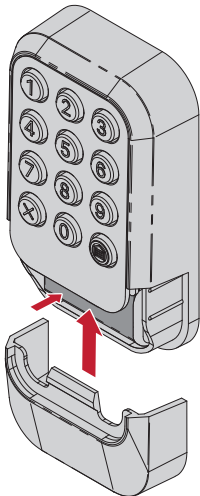
02 Pull battery out of the housing and remove battery from the keypad power leads.



03 Connect the new battery to the keypad power leads.



04 Place the battery inside the keypad housing and replace the battery cover.



Replacement Parts

Description	Part Number
Keypad Battery Cover	041-0495-000

Additional Resources

One Year Limited Warranty

The Chamberlain Group LLC ("Seller") warrants to the first consumer purchaser of this product that it is free from defect in materials and/or workmanship for a period of 1 year from the date of purchase.

For more information, visit www.myq.com/warranty

Contact Us

For additional information or assistance, please visit: support.chamberlaingroup.com

NOTICE: This device complies with part 15 of the FCC rules and Innovation, Science and Economic Development Canada license-exempt RSSs. Operation is subject to the following two conditions: (1) This device may not cause harmful interference, and (2) this device must accept any interference received, including interference that may cause undesired operation. Any changes or modification not expressly approved by the party responsible for compliance could void the user's authority to operate the equipment.

HOW TO ORDER REPAIR PARTS

DEVANCO  **CANADA**

19192 HAY ROAD, UNIT Q
SUMMERSTOWN,ON, K0C 2E0

TOLL FREE **1-855-931-3334**
WWW.DEVANCOCANADA.COM

**WHEN ORDERING REPAIR PARTS
PLEASE SUPPLY THE FOLLOWING INFORMATION:**

- ✓ **PART NUMBER**
- ✓ **DESCRIPTION**
- ✓ **MODEL NUMBER**